

Welding Supplies

Hose Assemblies

Hose Fittings

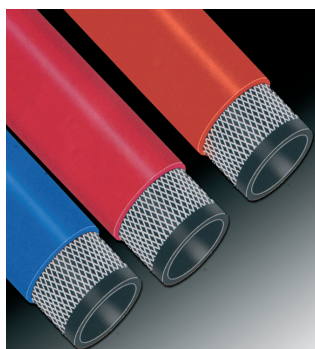
Check Valves

Raw Hose

Mercia International Products Ltd



Product Information Sheet



WELDING HOSE
LPG HOSE

SINGLE LINE WELDING HOSE conforming to: BS EN559

Tube: Black, EPDM/SBR blended.

Reinforcement: Textile braided high tensile synthetic yarn.

Cover: Red or blue, EPDM/SBR blended, smooth.

Applications: A flexible hose for conveying Oxygen, Acetylene, for welding, cutting and associated processes.

Temperature: -30°C + 70°C

LPG (Propane) HOSE conforming to: BS EN559

Tube: NBR, black.

Reinforcement: Textile braided high tensile synthetic yarn.

Cover: Orange NEOPRENE blended, smooth.

Applications: A flexible hose for conveying LPG for welding, cutting, industrial, heating and leisure.

Temperature: -30°C + 70°C

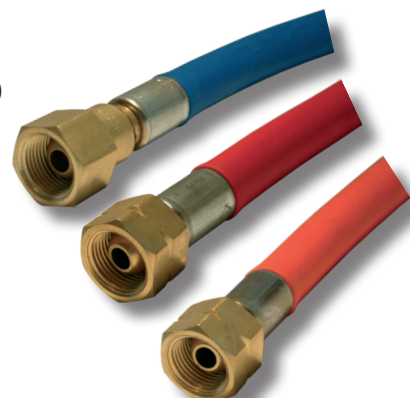
Welding Hose (Oxygen / Blue)							
Part N°	Internal Diameter inches"(mm)	Wall Thickness (mm)	Working Pressure (bar)	Burst Pressure (bar)	Bend Radius (mm)	Coil Length (M)	Coil Weight (Kg)
IWH-04BL	1/4" (6)	3.5	20	60	63	50	7.2
IWH-05BL	5/16" (8)	3.5	20	60	76	50	9.4
IWH-06BL	3/8" (10)	3.5	20	60	100	50	10.7
Welding Hose (Acetylene / Red)							
Part N°	Internal Diameter inches"(mm)	Wall Thickness (mm)	Working Pressure (bar)	Burst Pressure (bar)	Bend Radius (mm)	Coil Length (M)	Coil Weight (Kg)
IWH-04RD	1/4" (6)	3.5	20	60	63	50	7.2
IWH-05RD	5/16" (8)	3.5	20	60	76	50	9.4
IWH-06RD	3/8" (10)	3.5	20	60	100	50	10.7
LPG Hose (Propane / Orange)							
Part N°	Internal Diameter inches"(mm)	Wall Thickness (mm)	Working Pressure (bar)	Burst Pressure (bar)	Bend Radius (mm)	Coil Length (M)	Coil Weight (Kg)
IWH-04OR	1/4" (6)	3.5	20	60	63	50	7.2
IWH-05OR	5/16" (8)	3.5	20	60	76	50	9.4
IWH-06OR	3/8" (10)	3.5	20	60	100	50	10.7

Assemblies

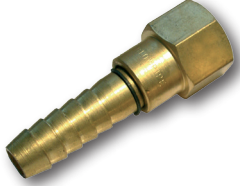
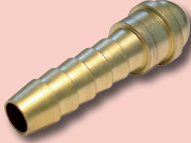

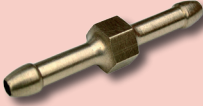

Approved welding hose assemblies supplied in lengths: 5, 10, 15, 20, 30 Metres
Singles, Sets and Oxy/Propane Sets Available (*Special Lengths Made to Order on Request*)

Specifications

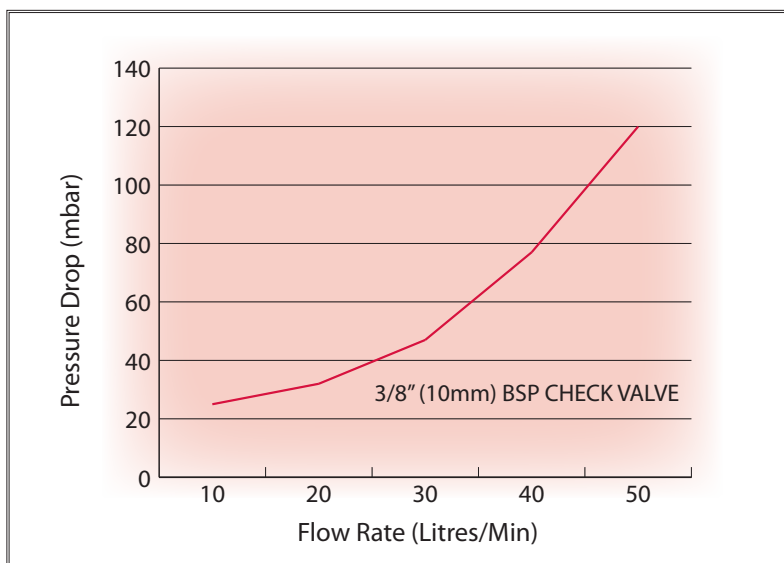
BS EN 560, BS EN 559, BS EN 730, BS EN 1256



CHECK VALVES, INSERTS, NUTS, SPLICERS & COUPLERS

Hose Fittings - Welding				
Part N°	Size (Hose Insert End Shown First)	Thread Type	Description	
IWF-CV-0404LH	1/4" - 1/4"	Left Hand BSP	Check Valve	
IWF-CV-0404RH	1/4" - 1/4"	Right Hand BSP	Check Valve	
IWF-CV-0406LH	1/4" - 3/8"	Left Hand BSP	Check Valve	
IWF-CV-0406RH	1/4" - 3/8"	Right Hand BSP	Check Valve	
IWF-CV-0506LH	5/16" - 3/8"	Left Hand BSP	Check Valve	
IWF-CV-0506RH	5/16" - 3/8"	Right Hand BSP	Check Valve	
IWF-CV-0606LH	3/8" - 3/8"	Left Hand BSP	Check Valve	
IWF-CV-0606RH	3/8" - 3/8"	Right Hand BSP	Check Valve	
IWF-IA-0404	1/4" - 1/4"	-	Insert	
IWF-IA-0406	1/4" - 3/8"	-	Insert	
IWF-IA-0506	5/16" - 3/8"	-	Insert	
IWF-IA-0606	3/8" - 3/8"	-	Insert	
IWF-NB-04LH	1/4"	Left Hand BSP	Nut	
IWF-NB-04RH	1/4"	Right Hand BSP	Nut	
IWF-NB-06LH	3/8"	Left Hand BSP	Nut	
IWF-NB-06RH	3/8"	Right Hand BSP	Nut	
IWF-HS-04	1/4"	-	Hose Splicer	
IWF-HS-05	5/16"	-	Hose Splicer	
IWF-HS-06	3/8"	-	Hose Splicer	
IWF-HC-0404LH	1/4" - 1/4"	Left Hand BSP	Hose Coupler	
IWF-HC-0404RH	1/4" - 1/4"	Right Hand BSP	Hose Coupler	
IWF-HC-0406LH	1/4" - 3/8"	Left Hand BSP	Hose Coupler	
IWF-HC-0406RH	1/4" - 3/8"	Right Hand BSP	Hose Coupler	
IWF-HC-0606LH	3/8" - 3/8"	Left Hand BSP	Hose Coupler	
IWF-HC-0606RH	3/8" - 3/8"	Right Hand BSP	Hose Coupler	

FLOW CHARACTERISTICS GRAPH



Mercia International Products Check Valves have been tested in accordance with BS EN 730